

OTCQB: **MGMLF**
TSX.V: **MGM**



MAPLE
GOLD MINES

DISTRICT SCALE **GOLD POTENTIAL**

CORPORATE PRESENTATION
JULY 2022

MAPLEGOLDMINES.COM



Cautionary Notes Regarding Forward-Looking Statements

This Corporate Presentation ("Presentation") includes "forward-looking information" and "forward-looking statements" (collectively referred to as "forward-looking statements") within the meaning of applicable Canadian securities legislation, Section 27A of the Securities Act of 1933 in the United States of America, as amended, (the "Securities Act") and Section 21E of the Securities Exchange Act of 1934 in the United States of America, as amended, (the "Exchange Act"). All statements other than statements of historical facts included in this Presentation, including, without limitation, those regarding Maple Gold's opinions and beliefs, financial position, business strategy, budgets, mineral resource estimates, estimates of enterprise value per resource ounce, ongoing or future development and exploration opportunities and projects, drilling, re-logging, geochemical and geological modeling plans, publication of updated mineral resource estimates, classification of mineral resources, and plans and objectives of management for properties and operations and future listing of warrants are forward-looking statements. Generally, forward-looking statements can be identified in this Presentation, without limitation, by the use of words or phrases such as "estimate", "project", "anticipate", "expect", "intend", "believe", "hope", "may" and similar expressions, as well as "will", "shall" and all other indications of future tense.

Forward-looking statements are based on certain estimates, expectations, analysis and opinions that management believed reasonable at the time they were made or in certain cases, on third party expert opinions. These forward-looking statements were derived utilizing numerous assumptions regarding expected growth, results of exploration and development, performance and business prospects and opportunities, general business and economic conditions, interest rates, the supply and demand for, deliveries of, and the level and volatility of prices of gold and related products, regulatory and governmental approvals, market competition, accuracy of mineral resource estimates and geological, operational and price assumptions on which such estimates are based, conditions in financial markets, future financial performance of Maple Gold, our ability to attract and retain skilled staff, our ability to procure equipment and supplies and results of exploration and development activities. While Maple Gold considers these assumptions to be reasonable, based on information currently available, they may prove to be incorrect. Forward-looking statements should not be read as a guarantee of future performance or results. To the extent any forward-looking statements constitute future-oriented financial information or financial outlooks, as those terms are defined under applicable Canadian securities laws, such statements are being provided to describe the current anticipated potential of Maple Gold and readers are cautioned that these statements may not be appropriate for any other purpose, including investment decisions.

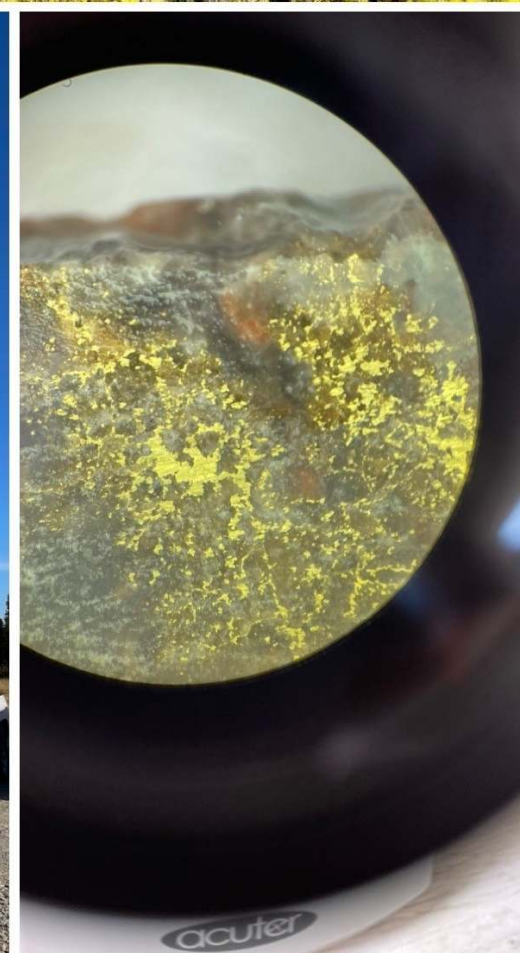
Such forward-looking statements involve known and unknown risks and uncertainties and other factors that may cause our actual events, results, performance or achievements to be materially different from any future events, results, performance or achievements expressed or implied by such forward-looking statements. Risks and uncertainties that may cause actual events, results, performance or achievements to vary materially include, but are not limited to, risks inherent to mineral exploration and development activities, changes in gold prices, changes in interest and currency exchange rates, inaccurate geological and metallurgical assumptions, unanticipated operational difficulties, government action or delays in the receipt of government approvals, adverse weather conditions, unanticipated events related to health, safety and environmental matters, labour disputes, failure of counterparties to perform their contractual obligations, changes or further deterioration in general economic conditions, and other risks discussed under the heading "Risks and Uncertainties" in Maple Gold's most recently filed MD&A. The foregoing list is not exhaustive of all factors and assumptions which may have been used. We cannot assure you that actual events, performance or results will be consistent with these forward-looking statements and management's assumptions may prove to be incorrect. Our forward-looking statements reflect Maple Gold's views as at the date of this Presentation. Except as may be required by law or regulation, Maple Gold undertakes no obligation and expressly disclaims any responsibility or obligation or undertaking to publicly release any updates or to revise any forward-looking statements, whether as a result of new information, future events or otherwise to reflect any change in Maple Gold's expectations or any change in events, conditions or circumstances on which any such statement is based. Given these uncertainties, readers are cautioned not to place undue reliance on these forward-looking statements, which speak only as of the date made.

Qualified Persons

The scientific and technical data contained in this presentation was reviewed and prepared under the supervision of Fred Speidel, M. Sc, P. Geo., Vice-President Exploration, of Maple Gold. Mr. Speidel is a Qualified Person under National Instrument 43-101 Standards of Disclosure for Mineral Projects. Mr. Speidel has verified the data related to the exploration information disclosed in this presentation through his direct participation in the work.

Cautionary Note to US Investors Concerning Resource Estimates

Information in this Presentation is intended to comply with the requirements of the TSX-Venture and applicable Canadian securities legislation, which differ in certain respects with the rules and regulations promulgated under the United States Securities Exchange Act of 1934, as amended ("Exchange Act"), as promulgated by the Securities and Exchange Commission. The Reserve and Resource estimates in this Presentation were prepared in accordance with National Instrument 43-101 – Standards of Disclosure for Mineral Projects ("NI 43-101") adopted by the Canadian Securities Administrators. The requirements of NI 43-101 differ significantly from the requirements of the United States Securities and Exchange Commission.



Blueprint for Maple Gold's success:

1. LOCATION, LOCATION, LOCATION ✓
2. ESTABLISHED AND GROWING RESOURCE ✓
3. HIGH-GRADE PAST-PRODUCING MINE ✓
4. CAPITAL TO EXECUTE ✓
5. EXPERIENCED TEAM / STRATEGIC PARTNER ✓

MAPLE GOLD MINES is a **well-capitalized** gold explorer with **district-scale projects** in a **premier jurisdiction**, a **strategic partnership** with **Canada's largest gold producer Agnico Eagle Mines**, and a **proven management** team with decades of mining experience

*"The best place to find a mine is right next to one."
– Old Mining Adage*



Located in Quebec's Prolific
Abitibi Greenstone Belt

MINE
CANADIAN
MALARTIC

Detour Lake
Gold Mine



Established/Growing Gold
Resource and High-Grade
Historic Mine Complex



3.0 Moz Au Resource*

+



High-Grade Past
Producer



Strategic & JV Partnership
with a Top Tier Gold Producer



AGNICO EAGLE

~12% shareholder

Asset combination

50/50 JV



Led by experienced mining,
exploration, and capital
markets professionals

IVANHOE

M I N E S

INMET

MINING

WHEATON
PRECIOUS METALS

MACQUARIE



Robust Balance Sheet

19.9M

+



C\$18.25M in JV
Funding



Strong Strategic and
Institutional Shareholders



AGNICO EAGLE

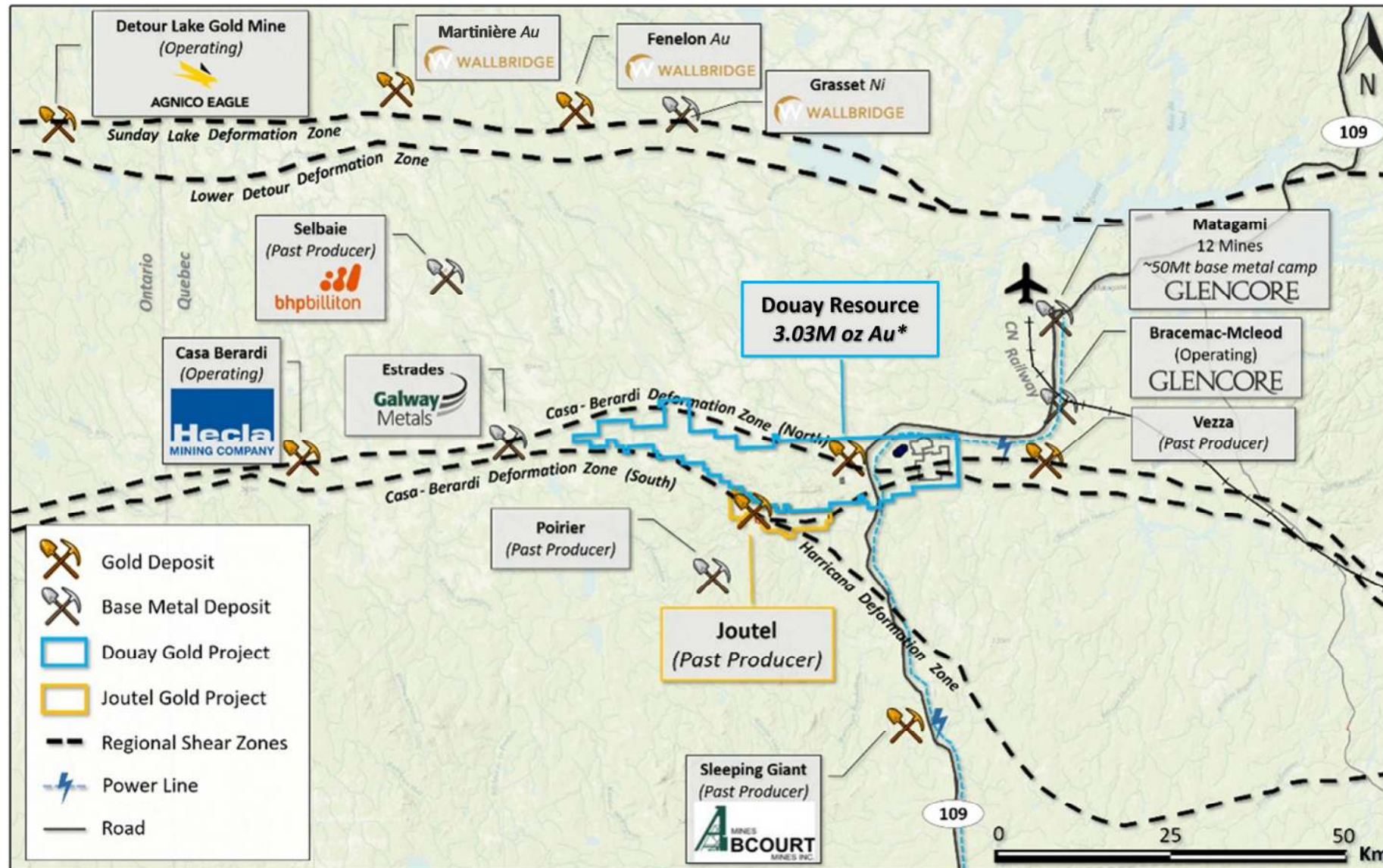


GOODMAN
INVESTMENT COUNSEL

J.Zechner
ASSOCIATES



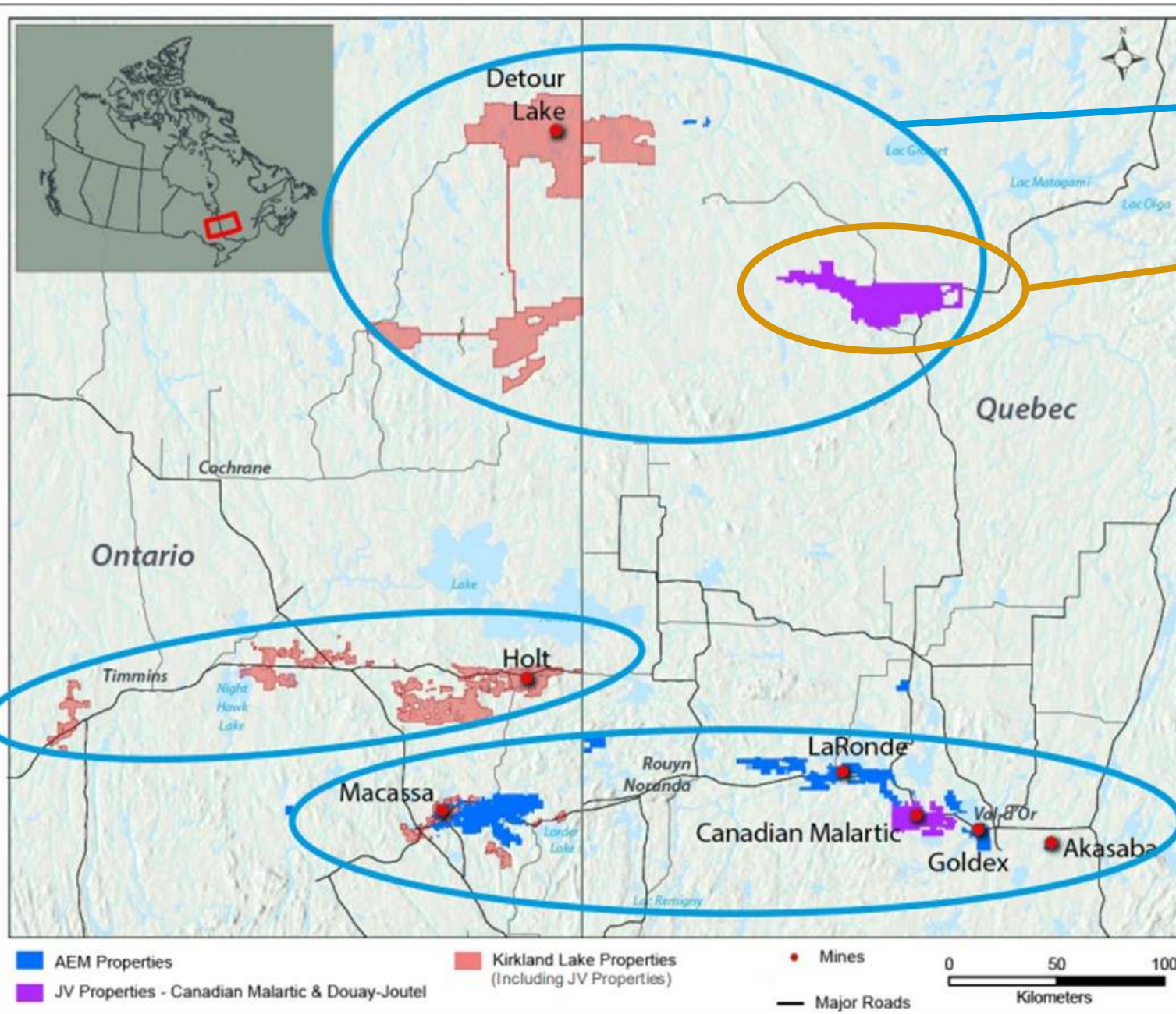
CRESCAT CAPITAL



*Total contained gold resources: M&I (0.5 Moz) Inferred (2.5 Moz) at a pit-constrained 0.45 g/t cut-off grade and an underground 1.15 g/t cut-off grade (refer to 2022 Mineral Resource Estimate table and notes in this presentation)

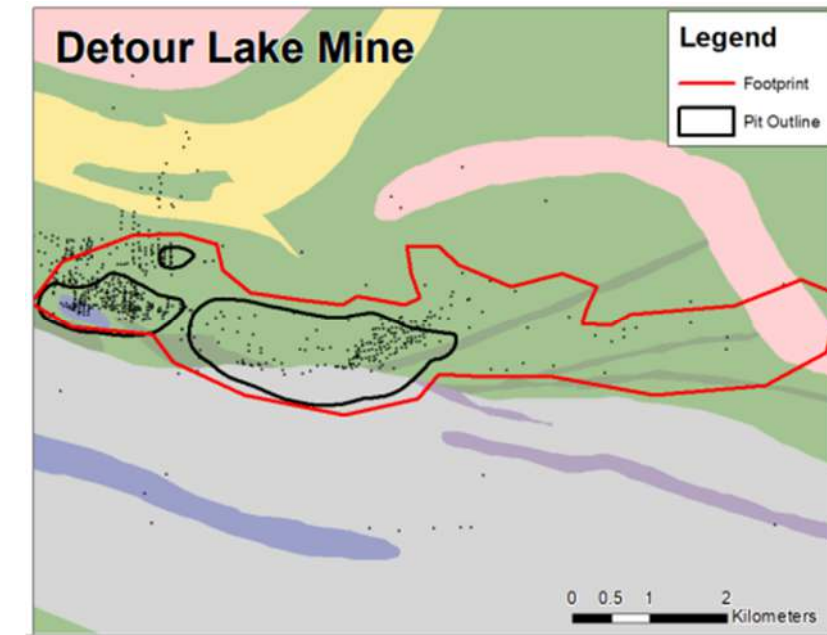
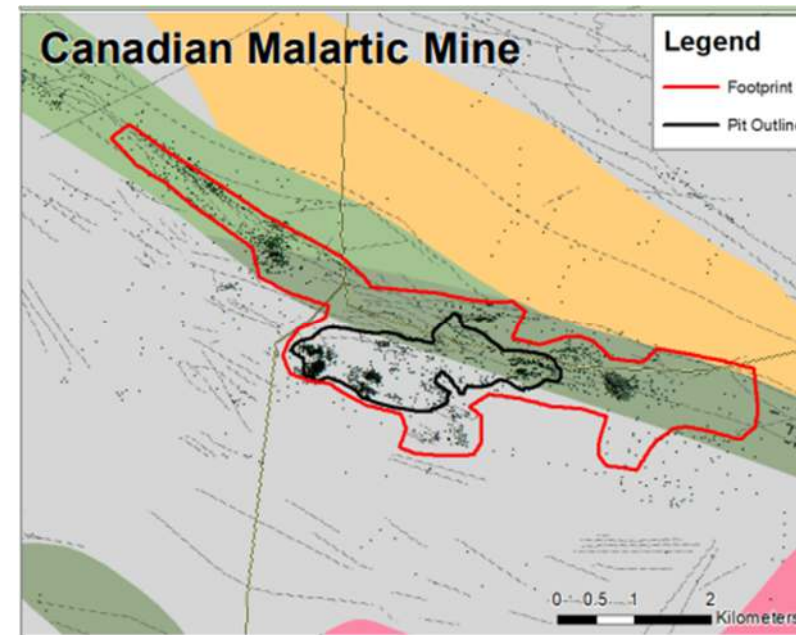
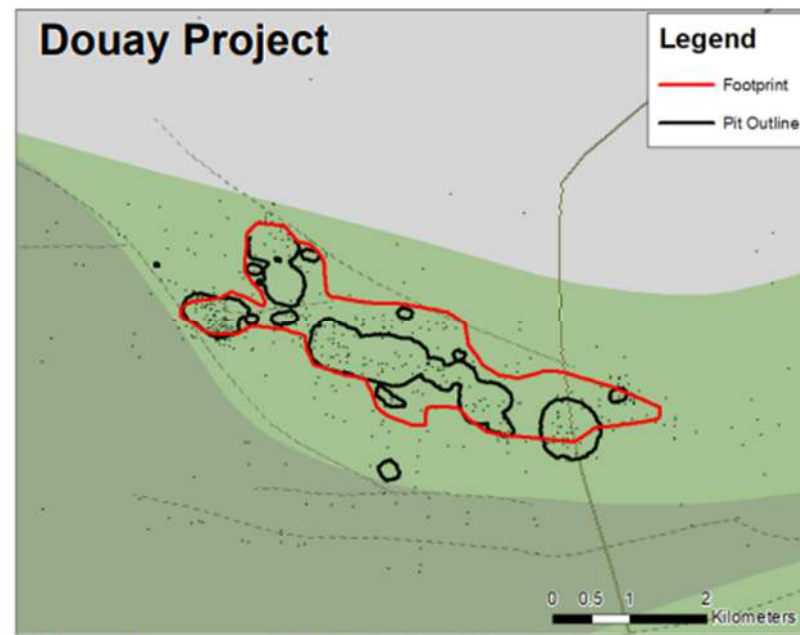
Disclaimer: Mineralization hosted on adjacent and/or nearby properties is not necessarily indicative of mineralization hosted on the Company's property.

- ❖ 2.5-hour drive north of Val d'Or, Quebec along paved 2-lane provincial highway (Hwy #109), which runs through the property
- ❖ Next to 1 of 6 major power lines in the province
- ❖ 55 km SW of Matagami with skilled labour, local airport and rail access
- ❖ Douay covers ~55 km of the Casa Berardi Deformation Zone
- ❖ Joutel straddles the Harricana Break and Joutel Deformation Zone over 15 km



- ❖ Blue ellipses highlight key synergies between Agnico and Kirkland Lake assets/operations
- ❖ Gold ellipse is Maple Gold's Douay-Joutel-Eagle 400 km² property package
 - Established and growing **3.03 Moz gold resource at Douay (50/50)**
 - High-grade historic gold mine complex that produced over **1.1 Moz at an average grade of 6.5 g/t at Joutel (50/50)**
 - High-grade past-producing **Eagle Mine Property (100%-controlled by Maple Gold)**

Source: AEM/KL investor presentation (September 28, 2021)



- **Similar mineralization footprint** to the two largest mines in the Abitibi
- Douay remains **underexplored** vs. Canadian Malartic and Detour Lake
 - **55km of strike along the Casa Berardi Deformation Zone**
 - **Significant exploration upside**

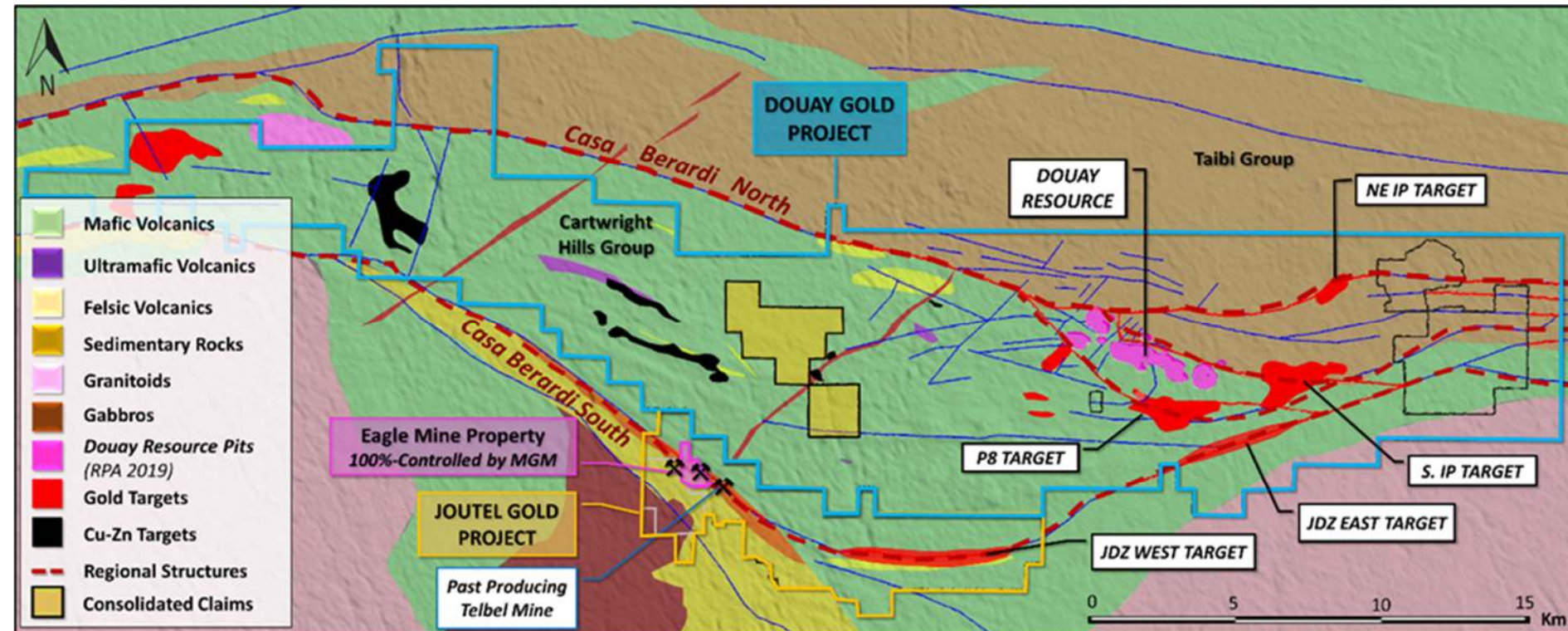
Disclaimer: Mineralization hosted on adjacent and/or nearby properties is not necessarily indicative of mineralization hosted on the Company's property. Shown for comparison purposes only.



AGNICO EAGLE

- CANADA'S LEADING GOLD PRODUCER & 3rd LARGEST GOLD PRODUCER WORLDWIDE.
- Takes extremely conservative and measured approach to investments and asset acquisition.

- ❖ 50-50 JV Agreement signed February 2021: Agnico funding **C\$18.25M** in exploration over 4 years (2021-24)
- ❖ Agnico's total investment to-date is ~**C\$14M** (as of Q4/21)
 - **C\$9.2M** in strategic equity investments in Maple Gold
 - **C\$4.85M** in JV funding to-date
- ❖ **Maple's VP Exploration is GM of JV operations**
- ❖ Consolidates MGM's Douay Project and Agnico's Joutel Project into a **400 km² district-scale property package**
- ❖ MGM and Agnico each retains a **2% NSR (\$40M buy-back provision)** on their respective projects contributed to the JV
- ❖ Agnico to contribute technical expertise and support Maple Gold with 3rd party project financing



~400 km² property package with an established gold resource at Douay, past producing Eagle-Telbel mines at Joutel and highly prospective for new gold/VMS discoveries across 55 km of strike along the Casa Berardi Deformation Zone.

DOUAY GOLD PROJECT (50%)

One of Quebec's Largest Undeveloped Gold Resources

Indicated: 10.0 Mt @ 1.59 g/t Au for **511 Koz Au**

Inferred: 76.7 Mt @ 1.02 g/t Au for **2.53 Moz Au**

Major resource expansion and new discovery potential across 357 km² property package - virtually royalty free

Recent Milestones & Upcoming Catalysts:

- ✓ Fall 2021 JV drill program results (Q1/2022)
- ❑ Mag-EM survey results and targeting (Q3/2022)
- ❑ Winter 2022 JV drill program results (Q3/2022)
- ❑ JV deep drill program at Douay (Q4/2022)



4 km long access road to camp from main highway that links Val d'Or and Matagami



72.7 g/t



334 g/t

Visible Gold (VG) in Douay drill core from maiden JV drilling campaign (Winter 2021) highlighting potential for orogenic overprinting on both sides of a key litho-structural boundary.

Pit-Constrained & Underground Mineral Resource Estimate (SLR 2022)			
Resource Category	Tonnes (Mt)	Grade (g/t Au)	Contained Metal (000 oz Au)
Pit-Constrained Mineral Resources (0.45 g/t Au cut-off)			
Indicated	10.0	1.59	511
Inferred	68.2	0.94	2,065
Underground Mineral Resources (1.15 g/t Au cut-off)			
Inferred	8.5	1.68	460
Total Mineral Resources			
Indicated	10.0	1.59	511
Inferred	76.7	1.02	2,525

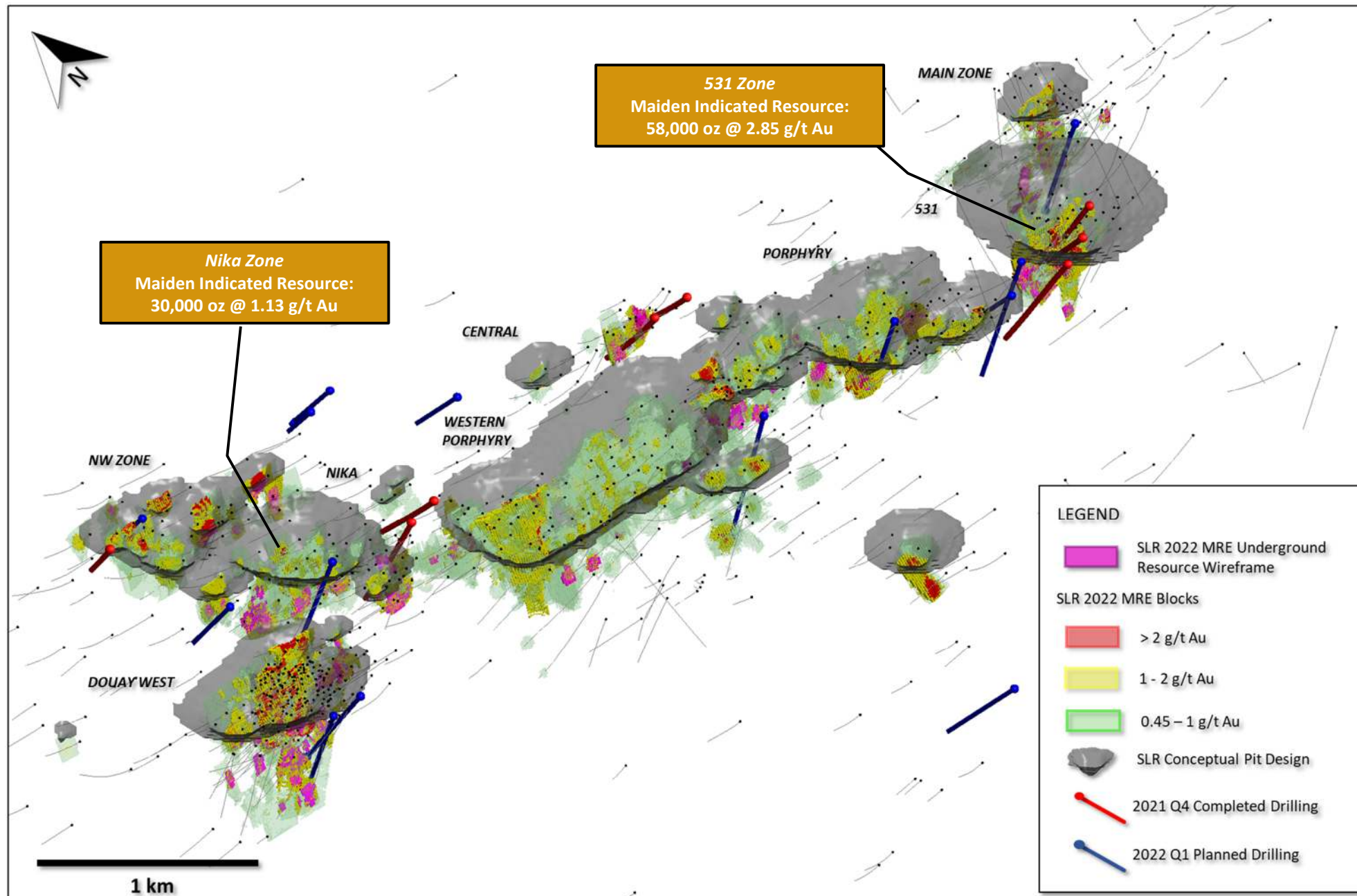
- ❖ **21% increase** in OP Indicated Resource to **511,000 oz** at an average grade of 1.59 g/t Au
- ❖ Slight increase in OP Inferred Resource to **2,065,000 oz** at an average grade of 0.94 g/t Au
- ❖ **50% increase** in UG Inferred Resource to **460,000 oz** at an average grade of 1.68 g/t Au
- ❖ Douay remains open for expansion and is largely untested below an average depth of ~350 m
- ❖ Ongoing drilling is primarily focused in areas with significant lateral and depth expansion potential

Notes:

- The 2022 MRE is compliant with Canadian Institute of Mining, Metallurgy and Petroleum ("CIM") Definition Standards (2014) incorporated by reference in NI 43-101. The effective date for the Mineral Resource Estimate is March 17, 2022.
- A minimum mining width of 3 m was applied to the Mineral Resource wireframes.
- Bulk density was interpolated for Nika, Porphyry, and 531 zones on a block per block basis using assayed values. For all other zones, bulk density ranging between 2.72 t/m³ and 2.88 t/m³ was assigned to Mineral Resources based on the zone.
- Pit-constrained Mineral Resources are reported using a cut-off grade of 0.45 g/t Au and underground Mineral Resources are reported using a 1.15 g/t Au cut-off grade.
- Pit-constrained Mineral Resources are reported within a preliminary pit shell using assumed mining costs of C\$3.00/t mined (rock) and C\$2.30/t mined (overburden), processing cost of C\$9.10/t milled, G&A cost of C\$2.70/t milled, and a gold recovery of 90%.
- The Whittle pit shell used to estimate Mineral Resources used a long-term gold price of US\$1,800/oz and a US\$/C\$ exchange rate of 0.80. However, the implied gold price for the Mineral Resources reported at the applied cut-off grade of 0.45 g/t would be significantly lower.
- Mineral Resources located outside the pit shell were reported on the basis of a potential underground mining operation at a gold cut-off grade of 1.15 g/t Au, based on a mining cost of C\$63/t and the same processing and G&A cost assumptions listed above.
- Mineral Resources are not Mineral Reserves and have not demonstrated economic viability.
- Numbers may not add due to rounding.

US\$23/oz Au discovery cost for incremental resources defined in the 2022 MRE

* For additional details on the RPA 2019 MRE, please refer to the Company's press release dated October 24, 2019 which can be found on the Company's website (www.maplegoldmines.com)

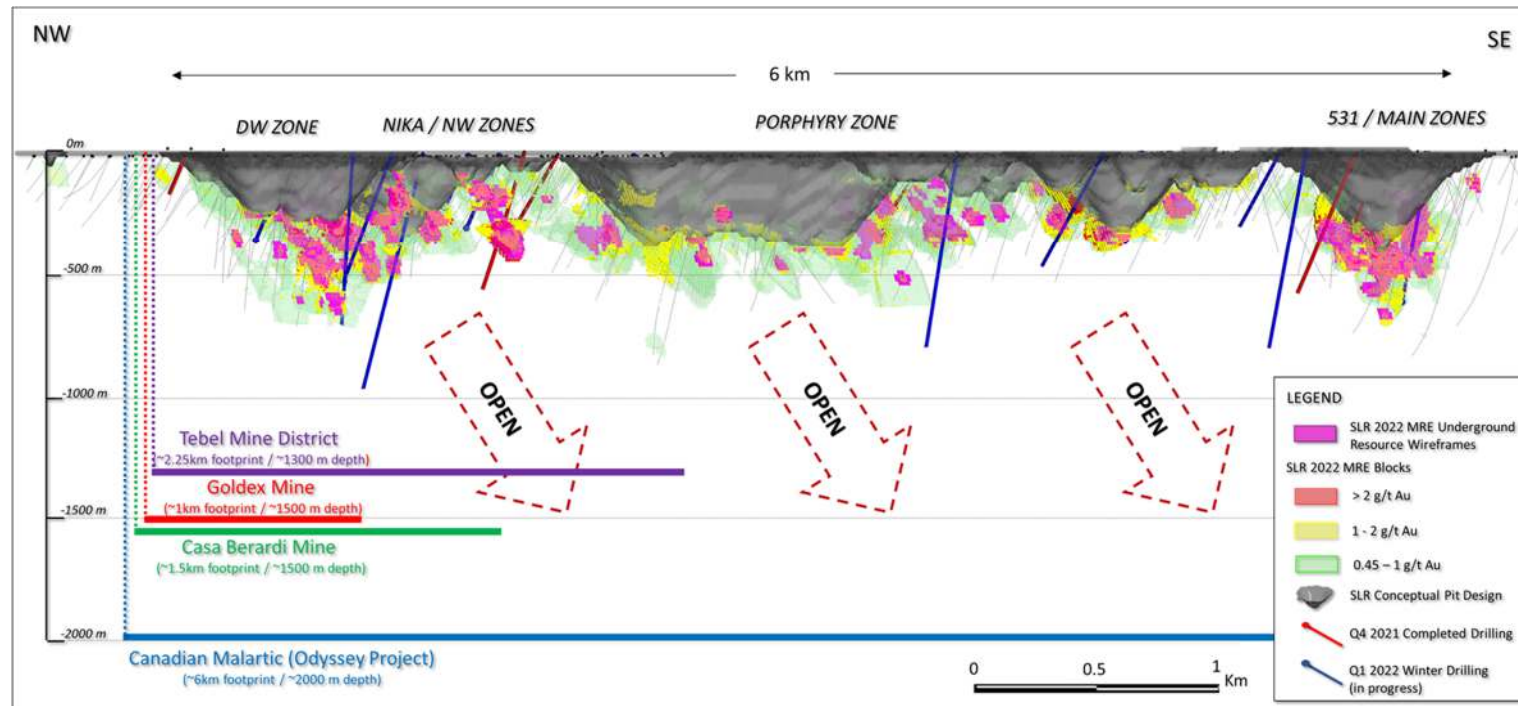


- ❖ Targeted infill drilling shows potential for future resource conversion and continues to de-risk the Douay deposit
- ❖ ~7,000 m of additional drilling completed by the JV since the 2022 MRE (not included)
- ❖ An additional ~10,000 m has been permitted for future drilling, with more aggressive step-out and deeper holes planned and approved by JV

21% conversion from Inferred to Indicated based on only 6% of total metres drilled

DOUAY UNTESTED RESOURCE EXPANSION POTENTIAL AT DEPTH

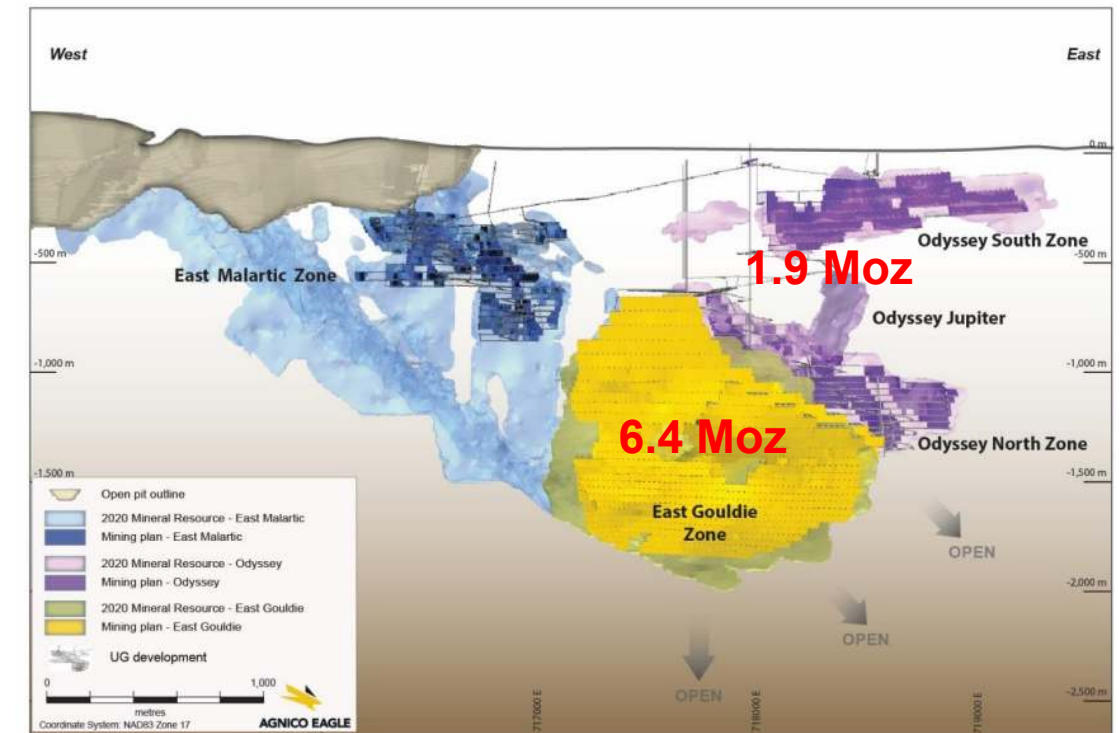
The Douay-Joutel JV is based on the Canadian Malartic JV Partnership



NW-SE vertical longitudinal section (all zones) showing distribution of below-pit-shell underground blocks >1.15 g/t Au cut-off. Other mine/project information shown for reference only.

- ❖ Average vertical drill depth at Douay is ~350 m
- ❖ JV has just completed two >1,000 m holes (deepest to-date)
- ❖ Additional deeper drilling planned this year

Canadian Malartic is now Canada's largest gold mine



Canadian Malartic, Vertical Longitudinal Section (viewing N)

- ❖ 2014: AEM/YRI Acquired Osisko Mining for C\$3.9bn: M&I: 11.1 Moz Au @ 1.06 g/t, Inf: 1.1 Moz Au @ 0.75 g/t
- ❖ Abitibi mines renowned for vertical continuity and higher grades at depth
- ❖ Canadian Malartic, Casa Berardi, and Goldex mines all have defined resources/mineralization down to 1,500-2,000 m*

*As per latest reports. Disclaimer: Mineralization hosted on adjacent and/or nearby properties is not necessarily indicative of mineralization hosted on the Company's property.

AGNICO EAGLE'S 1ST GOLD MINE: JOUTEL MINE COMPLEX (1974-1993)



Joutel Mine Site Entrance



Telbel Headframe



Eagle Mine Mill Complex



EAGLE
GOLD MINES
LIMITED

AGNICO MINES LIMITED

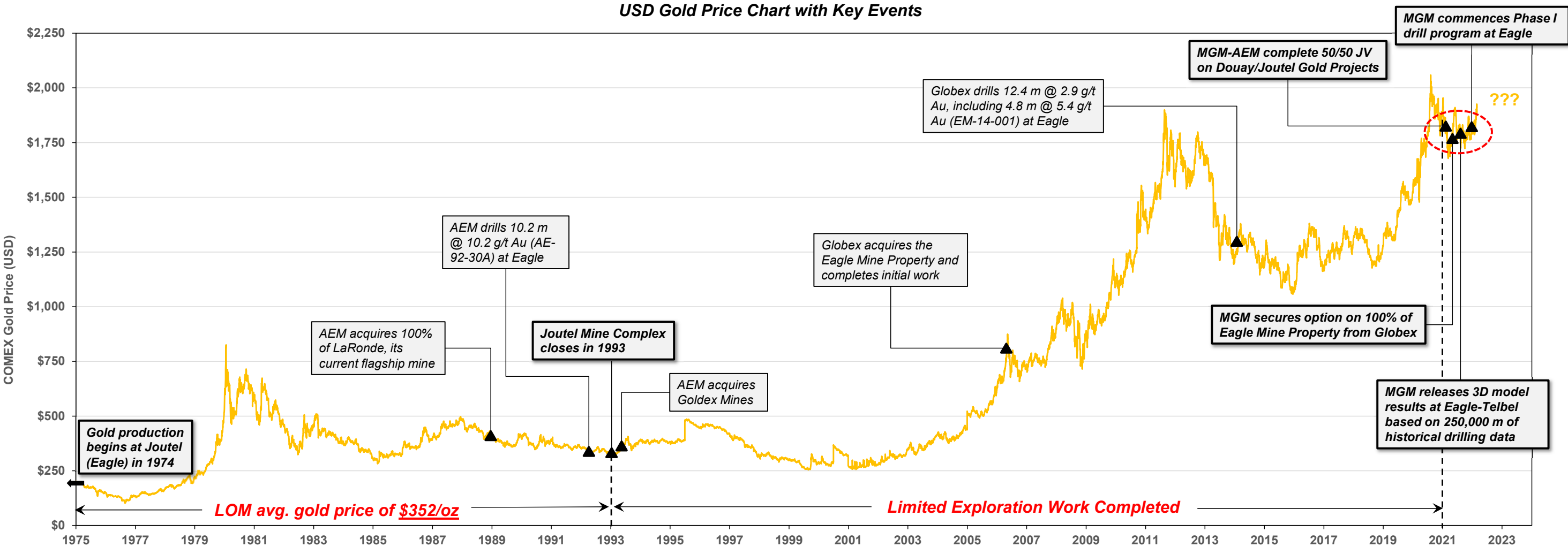
AMALGAMATION PROPOSAL

AMALGAMATION PROPOSAL

Note: Historical photos. All surface infrastructure has been reclaimed.

April 24, 1972

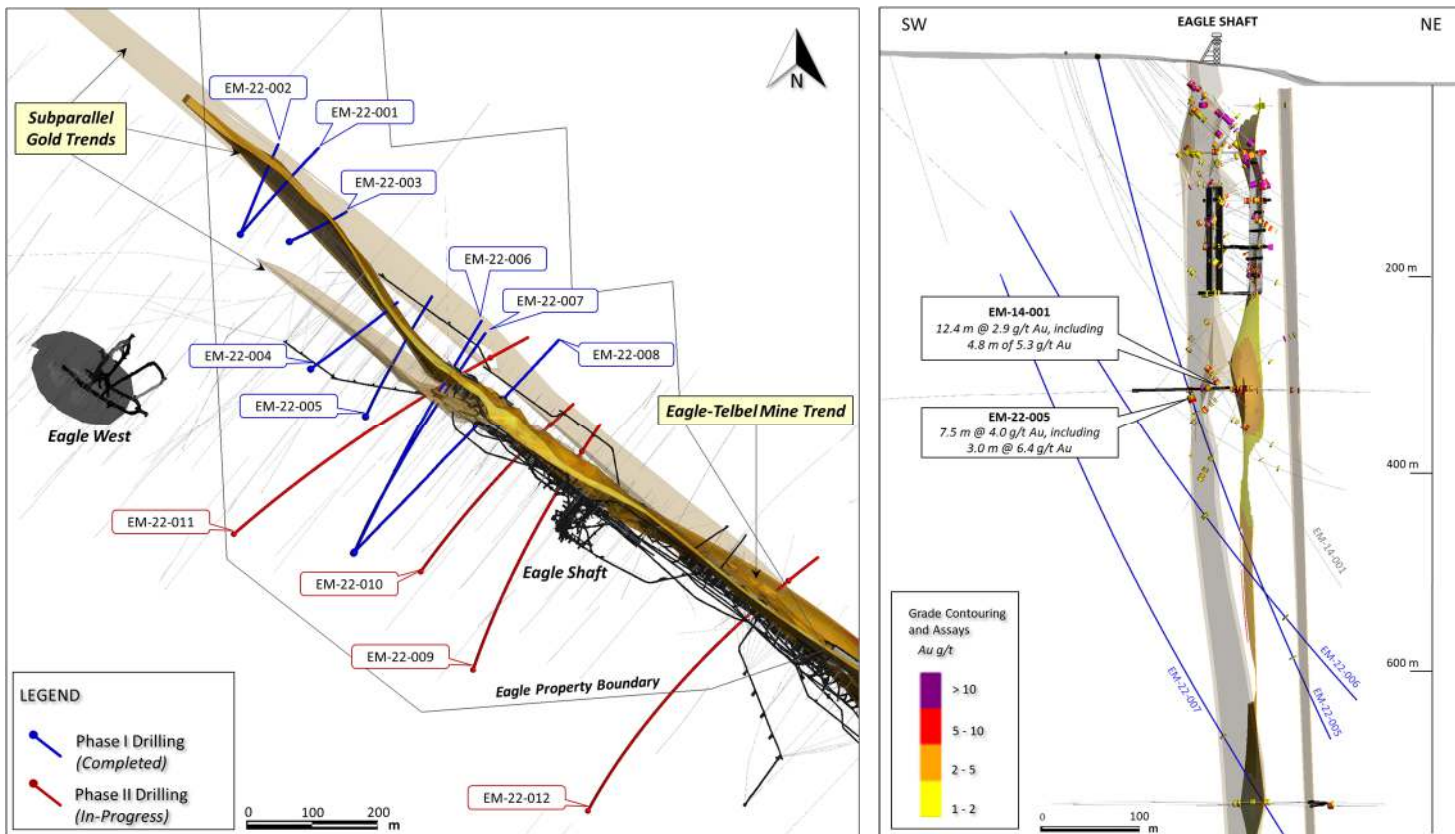
April 24, 1972



Joutel has been largely forgotten during the past 28 years since mine closure... UNTIL NOW!



Former Eagle Mine Operation



JOUTEL PROJECT (50%), EAGLE PROJECT (100%)

Hosts Agnico's former Joutel Mining Complex

Past production of 6.2 Mt at 6.5 g/t Au for total of **1.1 Moz gold***
Mined from 1974 to 1993 (closed when gold price was ~\$360/oz)

Significant potential for high-grade extensions of gold mineralization beyond previously mined out areas

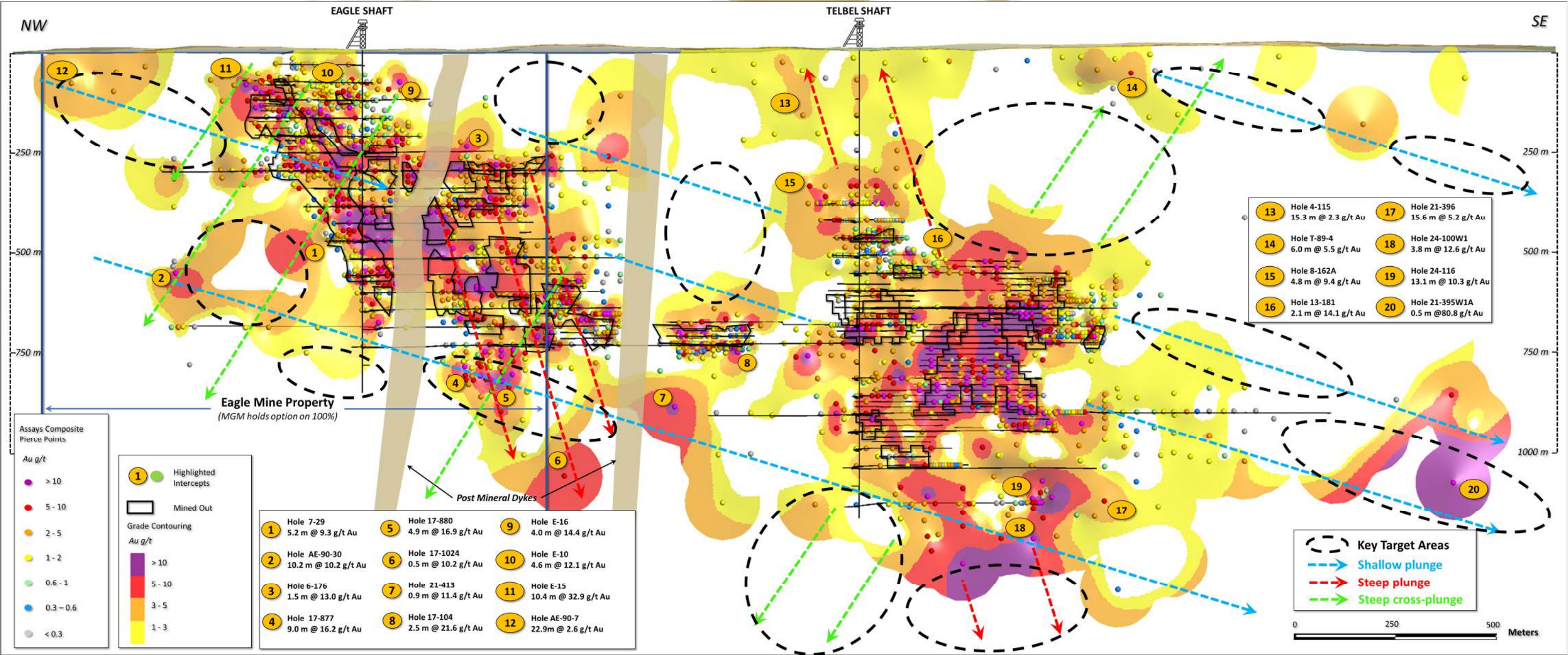
Recent Milestones & Upcoming Catalysts:

- ✓ 3D Modeling of 250,000 m of Historical Drill Data (Q3/2021)
- ✓ Priority Drill Targeting and Permitting (Q4/2021)
- ✓ ~4,500 m Phase I drill program completed at Eagle (Q1/2022)
- ✓ Phase I Eagle drill results (Q2/2022)
- ☐ ~4,000 m Phase II drilling and results at Eagle (Q3/2022)
- ☐ Maiden JV deep drill program at Joutel (Q3/2022)

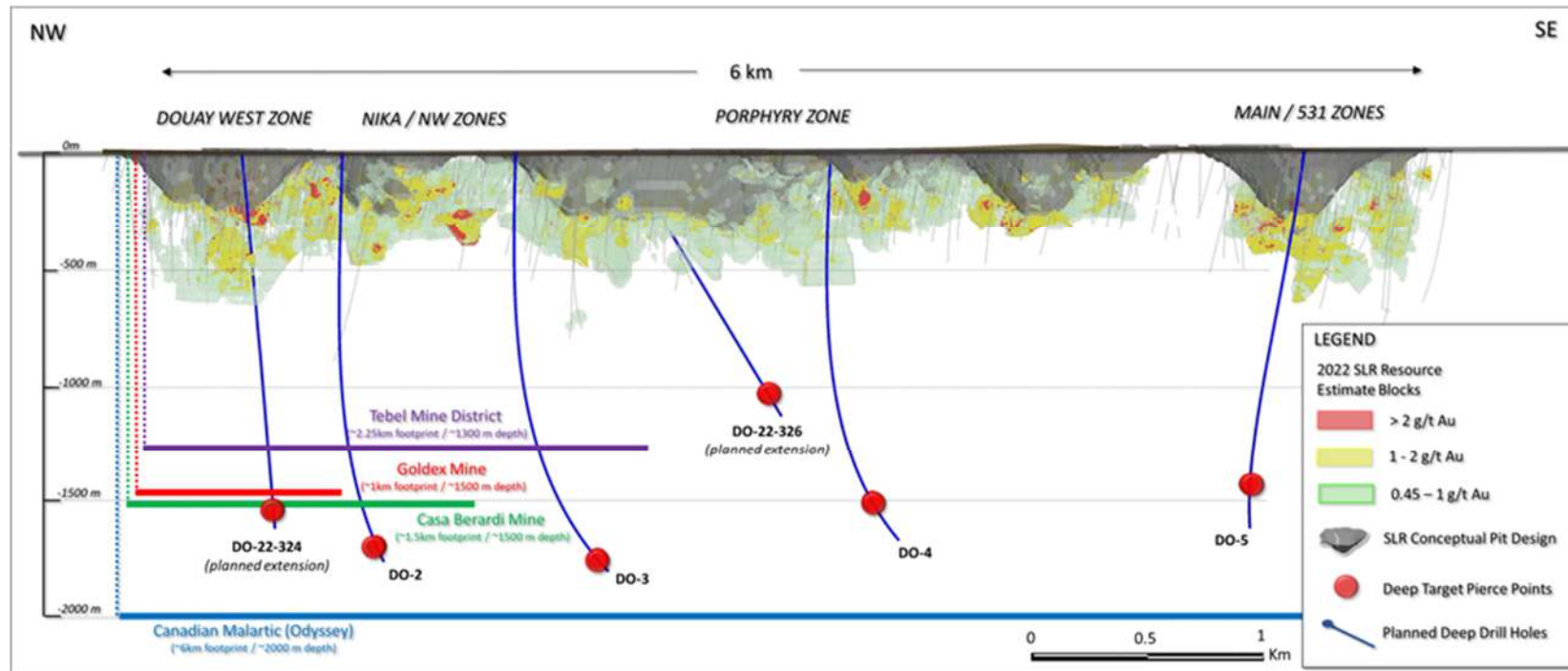
A rare, data-rich environment with ~250,000 m of historic drilling data (C\$75M replacement cost @ ~\$300/m)

* Historical production figures provided to Maple Gold by Agnico Eagle Mines

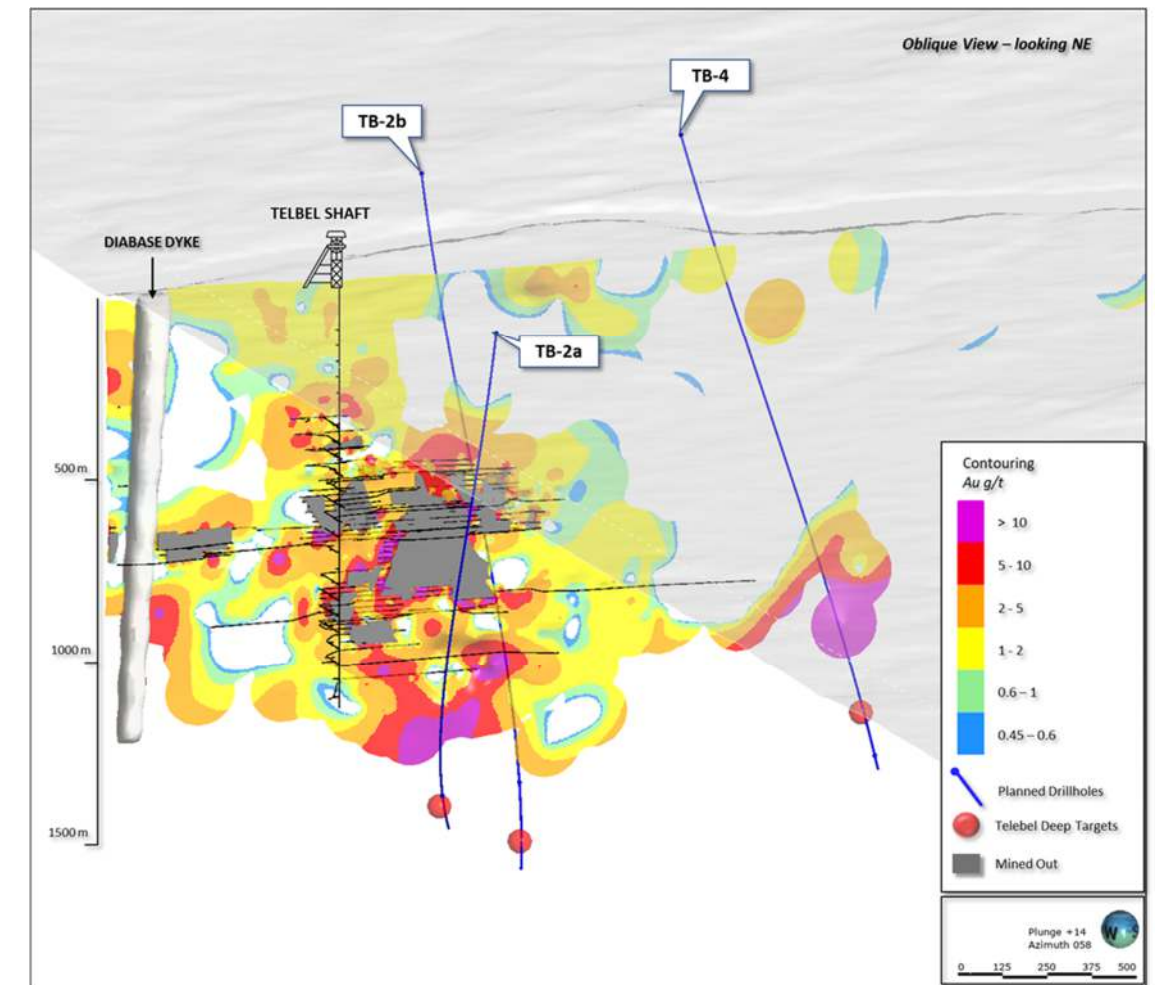
EAGLE-TELBEL LONG SECTION SHOWS SIGNIFICANT DRILLING GAPS



A High-Grade Restart Opportunity with Excellent Near-Mine Expansion Potential



Douay NW-SE vertical longitudinal section (all zones) showing location of proposed deep drill holes relative to existing drilling and SLR 2022 mineral resources and conceptual pits



Oblique view of Telbel mine area showing location of proposed deep drill holes

- ❖ **Maple Gold and Agnico have just agreed on a C\$4.8M budget increase to the JV's Year 2 exploration budget to fund a deep (1,500-2,000 m per hole) drilling program**
- ❖ **Expanded 2022 drill program will specifically target Douay's depth potential and will also kick-off maiden JV drilling at Joutel in the Telbel mine area**
- ❖ **Expected to include 4-6 drill holes and/or drill hole extensions totaling ~10,000 m**

Disclaimer: Mineralization hosted on adjacent and/or nearby properties is not necessarily indicative of mineralization hosted on the Company's property.

- **C\$20M** IN CASH (AS OF MARCH 31, 2021)
- **C\$14M** IN REMAINING JOINT VENTURE FUNDING FROM AGNICO EAGLE (2022-2024)
- **C\$9M** IN POTENTIAL WARRANT PROCEEDS
- **C\$40M** IN BUY BACK PROVISIONS TIED TO MAPLE GOLD'S 2% NSR AT DOUAY
- **C\$150M** IN DRILLING REPLACEMENT COSTS (250,000+ METRES OF CORE AT DOUAY & 250,000+ METRES OF DRILL DATA AT EAGLE-TELBEL AT ~C\$300/METRE AVG ALL-IN DRILLING COST)
- **US\$20/OZ** IN SITU GOLD VALUE BASED ON 50% OF **3.03 MOZ** GOLD RESOURCE AT DOUAY*
- **400 KM²** DISTRICT-SCALE PROPERTY PACKAGE WITH QUEUE OF REGIONAL DISCOVERY TARGETS
- CURRENT EV/OZ EXCLUDES SIGNIFICANT EXPLORATION BLUE SKY AT DOUAY AND RESTART POTENTIAL AT HISTORIC HIGH-GRADE JOUTEL MINE COMPLEX (**100% OF EAGLE / 50% OF TELBEL**)

**EXCLUDING C\$14M IN REMAINING JV EXPLORATION FUNDING FROM AGNICO EAGLE*

C\$59M

BASIC MARKET CAPITALIZATION

US\$20/oz

ENTERPRISE VALUE / GOLD OUNCE
(ATTRIBUTABLE)*



Upcoming Catalysts in H2/2022

- 1 Signed Definitive JV Agreement with Agnico Eagle ✓
 - 2 Initial JV drill program returned 3 of top 5 intercepts ever reported at Douay ✓
 - 3 Acquired 100% Option on Eagle Mine Property ✓
 - 4 Major digitization and 3D modelling work completed for the Eagle-Telbel Mine trend ✓
 - 5 Updated Douay Mineral Resource Estimate ✓
 - 6 Results from Fall 2021 drill campaign at Douay ✓
 - 7 JV Approves C\$4.8M Budget Increase for Deep Drilling ✓
 - 8 Phase I drill results at Eagle ✓
-
- ✓ ~4,000 m Phase II drill campaign at Eagle (completed)
 - ✓ ~7,000 m Winter 2022 drill program at Douay (completed)
 - Results from Eagle and Douay drill programs
 - Mag-EM survey results and regional exploration targeting
 - Additional 10-15 km of drilling across Douay/Joutel/Eagle
 - Supplemental C\$4.8M deep drilling program at Douay/Joutel

As of June 30, 2022

Shares Outstanding	335.9M
Warrants (100% Agnico) ¹	25.8M
Options ²	25.5M
Fully Diluted ³	392.5M
52-week high/low share price	\$0.46-\$0.16
Market Capitalization	C\$59 Million
Avg 3M daily volume (TSX-V)	~191,000

Financial Position

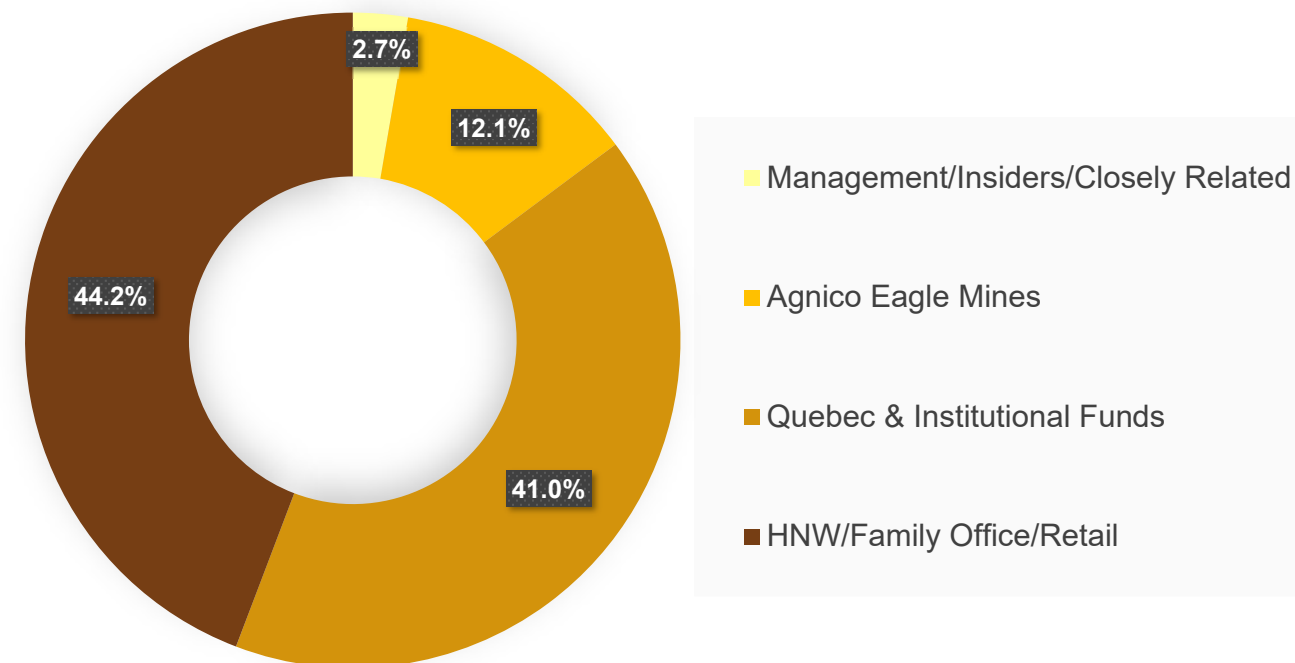
Cash Position (as of March 31, 2022)	C\$19.9 Million
Remaining JV Funding from Agnico Eagle (2022-2024)	C\$14.0 Million
Additional Funding on Warrant Exercise ¹	C\$8.9 Million

1. 25.8M (\$0.34) warrants held by Agnico Eagle Mines (expiry October 2023)

2. Average strike price of options is \$0.21

3. Includes 5.2M RSUs/DSUs

Share Ownership Mix



Major Shareholders Include:





Matthew Hornor
President & CEO



Joness Lang
Executive VP



Kiran Patankar
SVP Growth Strategy



Fred Speidel
VP Exploration



Michelle Roth
Chairperson/Director



Gérald Riverin
Director/Tech Advisor



Maurice Tagami
Director/Tech Advisor



David Broughton
Technical Advisor



\$15B

IVANPLATS
An IVANHOE MINES company



FIRST QUANTUM **\$30B**
MINERALS LTD.



\$5B

WHEATON **\$30B**
PRECIOUS METALS



Major company experience with successful discovery & transaction track records

CONTACT INFORMATION



SUITE 600
1111 WEST HASTINGS STREET
VANCOUVER, BC V6E 2J3
CANADA

PHONE: +1 (647) 265.8688

EMAIL: INFO@MAPLEGOLDMINES.COM

MAPLEGOLDMINES.COM

Douay headframe at night – October 2021